

Slicknet Marketplace

www.slicknet.com
Incorporated in Warwick, RI, USA

Deniri Automotive Products

January 04, 2020

Deniri Tire Pressure Gauge

One of the most important items for vehicle safety is tire pressure.

Tire pressure affects the ride of the vehicle, handling such as turning and braking and tire wear. Many people overlook the need to check or have someone else check the pressures. Tire pressures change due to faulty valves, rim to tire leaks, damaged tires or rims and additionally change dramatically with temperature changes. Especially during season changes.



Our Gauge SP-010

The Deniri Tire pressure gauge is very simple to use, accurate, durable and helpful in maintaining proper pressures.

It's not just for automobiles but also for trucks, RV's, ATV's, motorcycles, bicycles, lawn tractors, golf carts, wheelbarrows and anything else which has tires with pressures between 0 and 60 pounds per square inch (PSI).

Put one in your glove compartment and have one in your garage or shed.

Lifetime warranty.

[Purchase our SP-010 Gauge](#)

Details

Tire pressure should be checked once a month or at least every three months. Checking your pressures should be done when the tires are cold, not after a drive.

Remove the tire valve stem cap and press the tire gauge head onto the valve. The dial will show and hold the pressure even after it is removed from the valve. There is a release valve on the side of the shaft of the gauge which release the pressure and zero the gauge. This release valve can also be used to lower the tire pressure if it is over the recommended pressure.

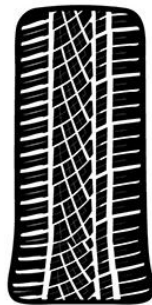
You'll find the manufacturer's recommended tire pressure for your car on a sticker in the door jamb, the door opening, or in your owner's manual. Some vehicles place the stickers in the glove compartment, on the trunk lid, in the console or on the fuel door. Recommended pressure is usually between 30 and 35 PSI (pounds per square inch) for most passenger vehicles.



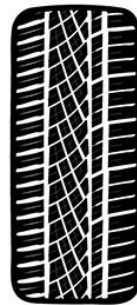
Check Your Tire Pressure

Image courtesy of
Continental Tires

**Under
Inflated Tire**



**Properly
Inflated Tire**



**Over
Inflated Tire**



[Purchase our SP-010 Gauge](#)

